
Release guide

LuciadCPillar 2025.0

24 June 2025

Contents

About this release.....	3
Benefits of the new features.....	4
Instant Line-of-sight preview	4
Sample code/documentation to get you started	4
Parameterized point styling and filtering	5
The power of style expressions	5
Sample code/documentation to get you started	5
Connect to elevation data in the Luciad Tile Service (LTS) format.....	6
Sample code/documentation to get you started	7
Other improvements	7
About Hexagon.....	8



About this release

The 2025.0 release of LuciadCPillar focuses on interactive visualization. The main new features are instant Line-of-sight previewing and parameterized point styling. Additionally, we remain committed to offering wide format support by allowing LuciadCPillar applications to connect to Luciad Tile Services (LTS) for elevation data, and by updating the HERE Maps support. The release also includes various smaller improvements that enhance the developer experience.

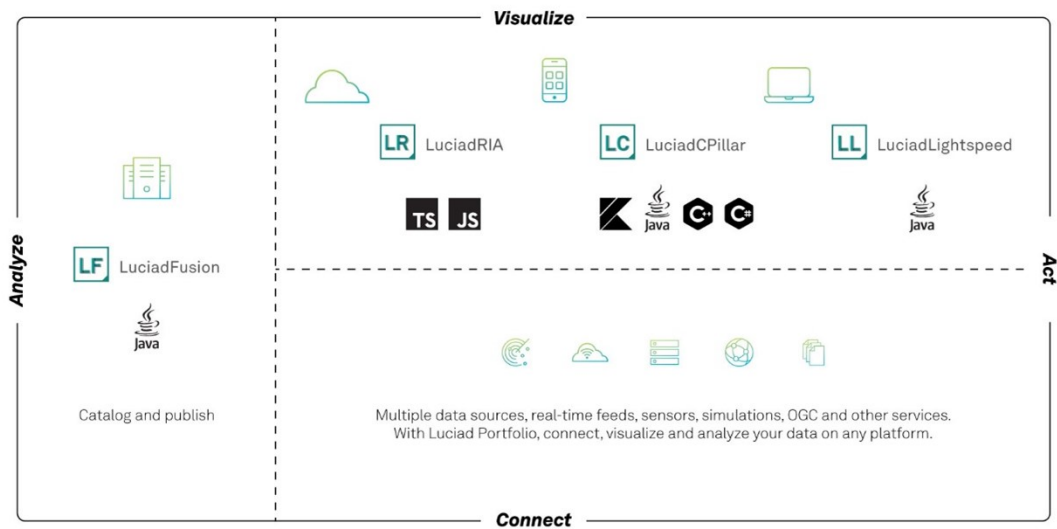


Figure: The Luciad portfolio

Benefits of the new features

Instant Line-of-sight preview

LuciadCPillar now offers the capability to compute a line-of-sight from a center point to its surrounding area. Assuming that the maximum range of visibility is the same in every direction, the area is defined as a circular coverage.

With this new feature, LuciadCPillar covers the use case of gaining an immediate impression of the line-of-sight for a given observer position, height and visibility range, based on the elevation data available in the view. This line-of-sight result is dynamic: changes in the parameters and changes in the available elevation data will trigger an update. For example, when the user navigates the view, the application may load additional elevation data. Parameters can change because of user actions, or automatically, because of position changes of the observer.

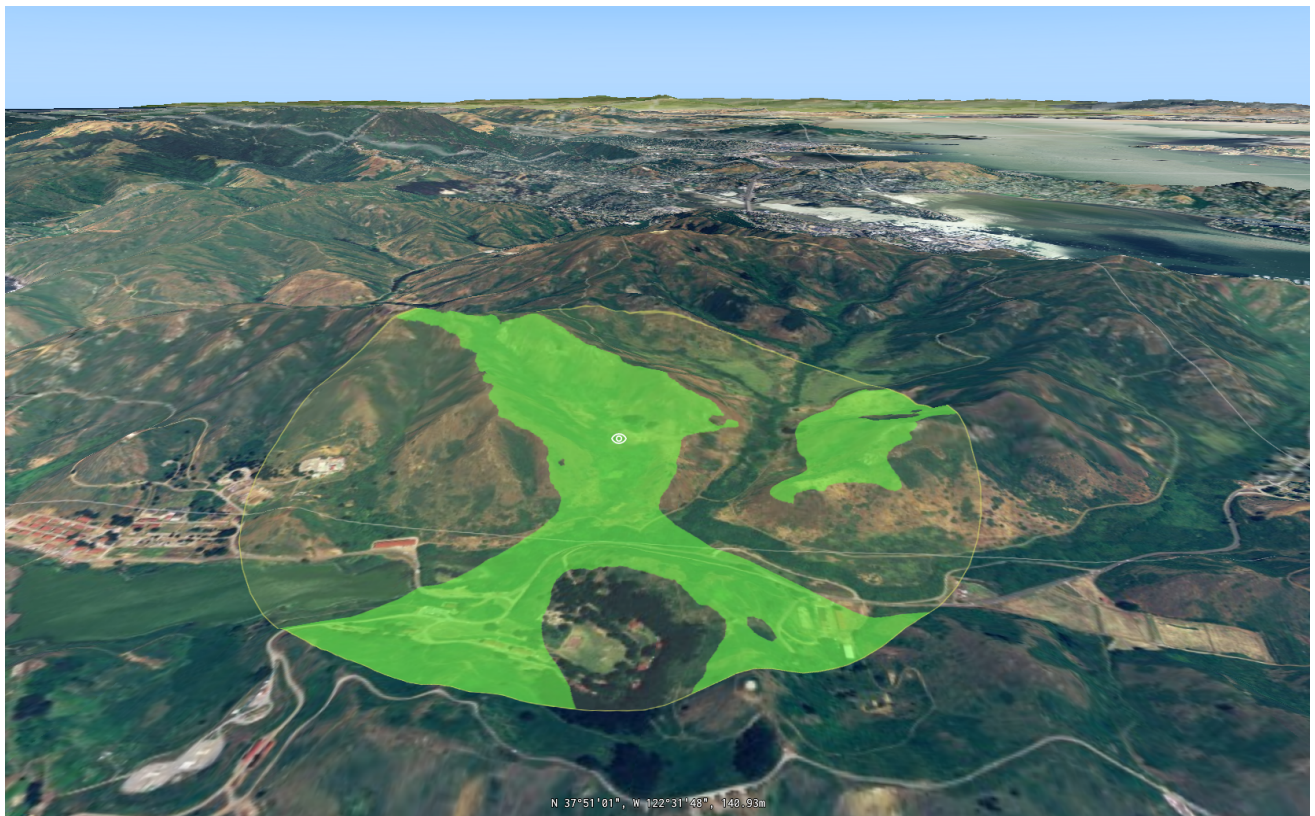


Figure: A calculation of the line-of-sight from an observer to its surrounding area

Sample code/documentation to get you started

You can experiment with this feature using the Line-of-sight sample, shown in [A calculation of the line-of-sight from an observer to its surrounding area](#). It pre-loads elevation data and allows you to add observers. Note that this sample is available for C++, C# and Android. To help you integrate this feature into your project, we added the article [Visualizing line-of-sight](#).

Parameterized point styling and filtering

This release adds parameterized point styling and filtering to LuciadCPillar. Parameterized styling and filtering is a unique concept throughout the products of the Luciad portfolio. It involves the use of style expressions to specify how to display features. LuciadCPillar evaluates these expressions on the GPU, on each frame, for an entire group of features. The main advantage of this approach over non-expression-based feature styling is that values in the style expressions can adapt continuously with almost no overhead. This means that you can efficiently perform style updates for many features. A typical use case is the display of radar plots.

The power of style expressions

Style expressions offer a tool to control several aspects of feature visualization:

- The icon used to visualize the point
- A modulation color to apply to the icon
- A scale factor to apply to the icon
- The visibility of the icon itself, which allows you to control which feature is displayed

To help you build those expressions, the *StyleExpressionFactory* offers building blocks as well as various arithmetic and control flow operations to combine the building blocks in more complex expressions.

Sample code/documentation to get you started

The article [Parameterized feature styling](#) offers a comprehensive overview of how to use parameterized styling and filtering. You can find an illustration of this feature in a dedicated sample titled "Parameterized Styling".

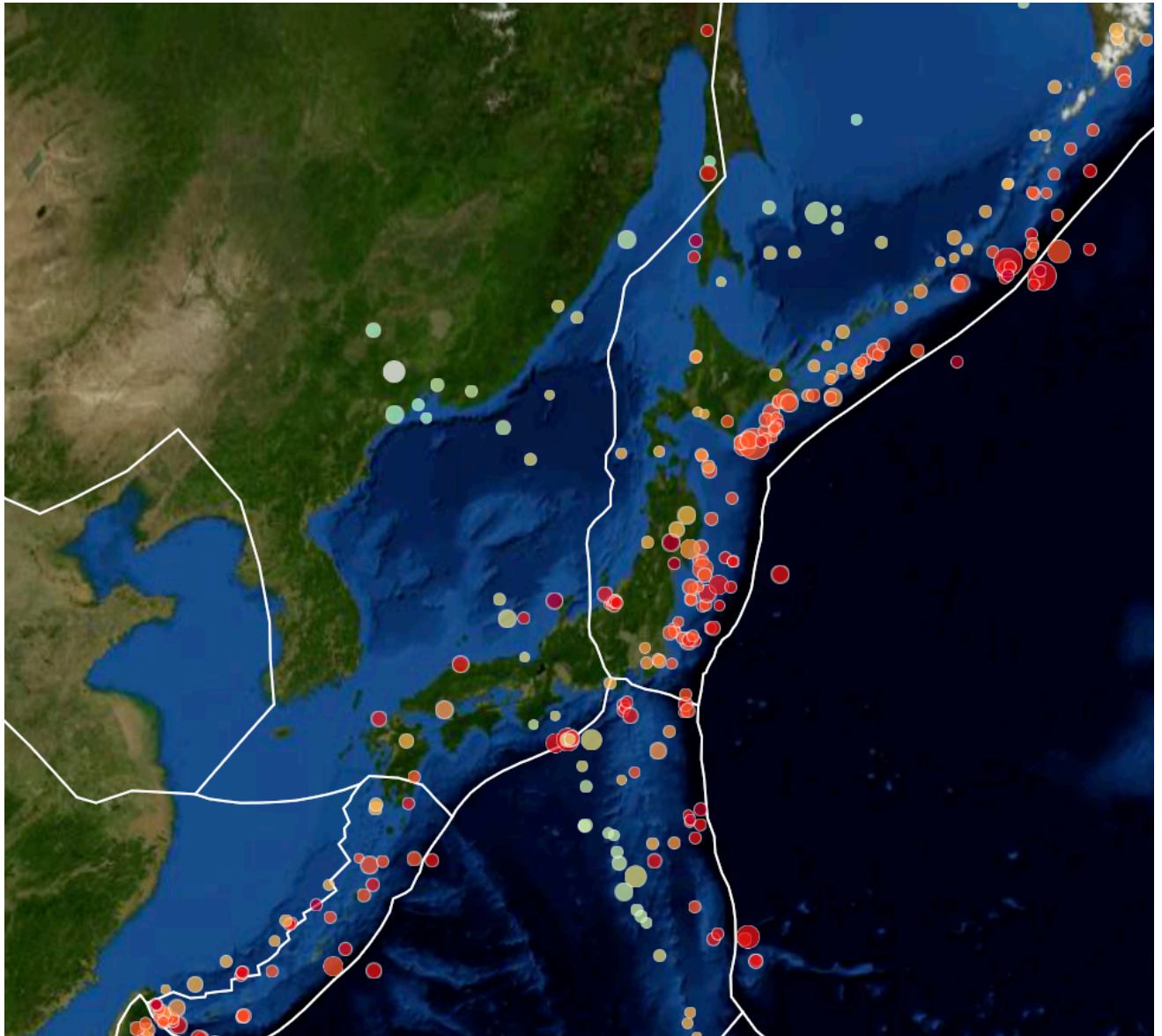


Figure: Points with varying colors and scale depending on feature properties

Connect to elevation data in the Luciad Tile Service (LTS) format

One of the service types offered by LuciadFusion for serving elevation data is LTS. This service type returns static maps, rendered as images, or elevation data. Elevation data in any of the formats supported by LuciadFusion can be converted into an LTS service. With this approach, you avoid having to access elevation data directly from the LuciadCPillar application. Instead, you stream the data from a remote location in a tiled and multi-leveled way.



LuciadCPillar now offers a connector to LTS services. You can access all information published inside the LTS capabilities, choose the desired coverages and visualize the resulting data on the map.

Sample code/documentation to get you started

The LuciadCPillar data formats documentation now includes a new page dedicated to the LTS format: [Data Formats: LTS](#).

Other improvements

Updated HERE Maps support

The HERE Maps Map Tile API v2 [was deprecated by HERE](#). We updated the LuciadCPillar HERE Maps sample. It now illustrates the usage of the Raster Tile API v3.

Creation of circles and arc bands

LuciadCPillar now offers utility classes for the interactive creation and editing of circles (by center point) and arc bands on the Map. To find out how to use those utility classes, see the tutorial [Creating a custom geometry creator](#).

Security upgrades

Several third-party libraries were upgraded. Detailed information can be found in the [release notes](#).



About Hexagon

Hexagon is the global leader in digital reality solutions, combining sensor, software and autonomous technologies. We are putting data to work to boost efficiency, productivity, quality and safety across industrial, manufacturing, infrastructure, public sector and mobility applications.

Our technologies are shaping production and people-related ecosystems to become increasingly connected and autonomous — ensuring a scalable, sustainable future.

Hexagon's Safety, Infrastructure & Geospatial division improves the resilience and sustainability of the world's critical services and infrastructure. Our solutions turn complex data about people, places and assets into meaningful information and capabilities for better, faster decision-making in public safety, utilities, defense, transportation and government.

Hexagon (Nasdaq Stockholm: HEXA B) has approximately 24,500 employees in 50 countries and net sales of approximately 5.4bn EUR. Learn more at [hexagon.com](https://www.hexagon.com) and follow us [@HexagonAB](https://twitter.com/HexagonAB).

Copyright

© 2024 Hexagon AB and/or its subsidiaries and affiliates. All rights reserved

Warning: The product made the subject of this documentation, including the computer program, icons, graphical symbols, file formats, audio-visual displays and documentation (including this documentation) (collectively, the "Subject Product") may be used only as permitted under the applicable software license agreement, and subject to all limitations and terms applicable to use of the Subject Product therein. The Subject Product contains confidential and proprietary information of Intergraph Corporation, a member of the Hexagon Group of companies ("Hexagon"), its affiliates, and/or third parties. As such, the Subject Product is protected by patent, trademark, copyright and/or trade secret law and may not be transferred, assigned, provided, or otherwise made available to any third party in violation of applicable terms and conditions cited further below.

Terms of use

By installing, copying, downloading, accessing, viewing or otherwise using the Subject Product, you agree to be bound by the terms of the EULA found here: https://legaldocs.hexagon.com/sig/Licenses/EULA_SA_SIG-Eng_062021.pdf

Disclaimers

Hexagon and its suppliers believe the information in this publication is accurate as of its publication date. Hexagon is not responsible for any error that may appear in this document. The information and the software discussed in this document are subject to change without notice.

Language translation disclaimer: The official version of the documentation is in English. Any translation of this document into a language other than English is not an official version and has been provided for convenience only. Some portions of a translation may have been created using machine translation. Any translation is provided “as is.” Any discrepancies or differences occurring in a translation versus the official English version are not binding and have no legal effect for compliance or enforcement purposes. Hexagon disclaims any and all warranties, whether express or implied, as to the accuracy of any translation.

Reasonable efforts have been made to provide an accurate translation; however, no translation, whether automated or provided by human translators is perfect. If any questions arise related to the accuracy of the information contained in a translated version of documentation, please refer to its official English version. Additionally, some text, graphics, PDF documents and other accompanying material may not have been translated.

Links to third-party websites

This document may provide links to third-party websites for your convenience and information. Third-party websites will be governed by their own terms and conditions. Hexagon does not endorse companies or products to which it links.

Third-party websites are owned and operated by independent parties over which Hexagon has no control. Hexagon shall not have any liability resulting from your use of the third-party website. Any link you make to or from the third-party website will be at your own risk and any information you share with the third-party website will be subject to the terms of the third-party website, including those relating to confidentiality, data privacy and security.

Hexagon provides access to Hexagon international data and, therefore, may contain references or cross references to Hexagon products, programs and services that are not announced in your country. These references do not imply that Hexagon intends to announce such products, programs or services in your country.

Revisions

Hexagon reserves the right to revise these terms at any time. You are responsible for regularly reviewing these terms. Your continued use of this document after the effective date of such changes constitutes your acceptance of and agreement to such changes.

Questions

[Contact us](#) with any questions regarding these terms.